

Declaration of performance

DoP number: 12802912-B1W1280

Product name:

VALERIAAN 09

(1) Identification code of product-type is DoP-number

(2) Reference number: 12802912-B1W1280

(4)



Wienerberger

Wienerberger NV

8500 Kortrijk Kapel ter Bede

(3) Intended use(s) in masonry walls, columns and partitions for:

unprotected masonry

(6) Assessment and verification of constancy of performance:

System 2+

(7) Notified Body:

0749

Performed:

(i) initial inspection of the manufacturing plant and of factory production control

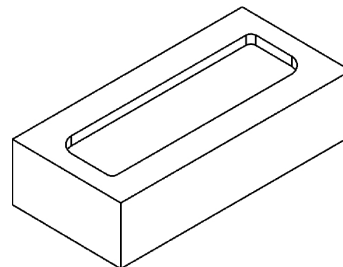
(ii) continuous surveillance, assessment and evaluation of factory production control and issued certificate number 0749-CPD-BC2-201

(9) Declared performance:

Type of unit: HD -masonry unit

Dimensions and tolerances

| | | | Tm | Rm |
|------------------------|----------|-----|-----|----|
| Length: | mm | 215 | ± 6 | 9 |
| Width: | mm | 102 | ± 4 | 6 |
| Height: | mm | 65 | ± 3 | 5 |
| Tolerance: | category | T1 | | |
| Range: | category | R1 | | |
| Flatness of bed faces: | mm | NPD | | |
| Plane parallelism: | mm | NPD | | |



actual configuration may vary slightly

Configuration

| | | | | |
|-----------------------------|---|------|--|--|
| Group of the unit: | - | 1 | | |
| Volume of all formed voids: | % | NPD | | |
| Volume of frogs: | % | < 20 | | |

Density

| | | | | |
|--------------------|-------------------|---------|--|--|
| Gross dry density: | kg/m ³ | 1400 | | |
| Net dry density: | kg/m ³ | 1550 | | |
| Tolerance: | category / % | D1 / 10 | | |

Compressive strength

| | | | | |
|----------------------------|-------------------|-----|--|--|
| Category: | - | I | | |
| Perpendicular to bedface: | N/mm ² | 12 | | |
| Perpendicular to header: | N/mm ² | NPD | | |
| Perpendicular to header 2: | N/mm ² | NPD | | |
| Bond strength: | N/mm ² | NPD | | |

Thermal conductivity λ₁₀, dry, unit:

| | | | | |
|--|---------|------|---------------------------------------|--|
| | W/(m·K) | 0.69 | Determination method EN 1745:2012: S1 | |
|--|---------|------|---------------------------------------|--|

Water vapour permeability:

| | | | | |
|--|---|----------|--|--|
| | - | μ = 5/10 | Tabulated min. and max. value according EN 17. | |
|--|---|----------|--|--|

Durability:

| | | | | |
|--|----------|----|--|--|
| | category | F2 | | |
|--|----------|----|--|--|

Water absorption:

| | | | | |
|--|---|----|--|--|
| | % | 19 | | |
|--|---|----|--|--|

Initial rate of water absorption:

| | | | | |
|--|--------------------------|--------|--|--|
| | kg/(m ² ·min) | 0.01-3 | | |
|--|--------------------------|--------|--|--|

Active soluble salt content:

| | | | | |
|--|----------|----|--|--|
| | category | S2 | | |
|--|----------|----|--|--|

Moisture movement:

| | | | | |
|--|------|-----|--|--|
| | mm/m | NPD | | |
|--|------|-----|--|--|

Reaction to fire:

| | | | | |
|--|-------|----|--|--|
| | class | A1 | | |
|--|-------|----|--|--|

Dangerous substances:

| | | | | |
|--|---|-----|--|--|
| | - | NPD | | |
|--|---|-----|--|--|

(10) The performance of the product is in accordance with the specification above.

Signed on behalf of the manufacturer:

CEO

2013-07-01



Johan Van Der Biest

Wienerberger NV
8500 Kortrijk Kapel ter Bede

EN 771-1:2011

Supplementary national information:

DoP number: 12802912-B1W1280

Product name:

VALERIAAN 09

(1) Identification code of product-type is DoP-number

(2) Reference number: 12802912-B1W1280

(4)



Wienerberger

Wienerberger NV

8500 Kortrijk Kapel ter Bede